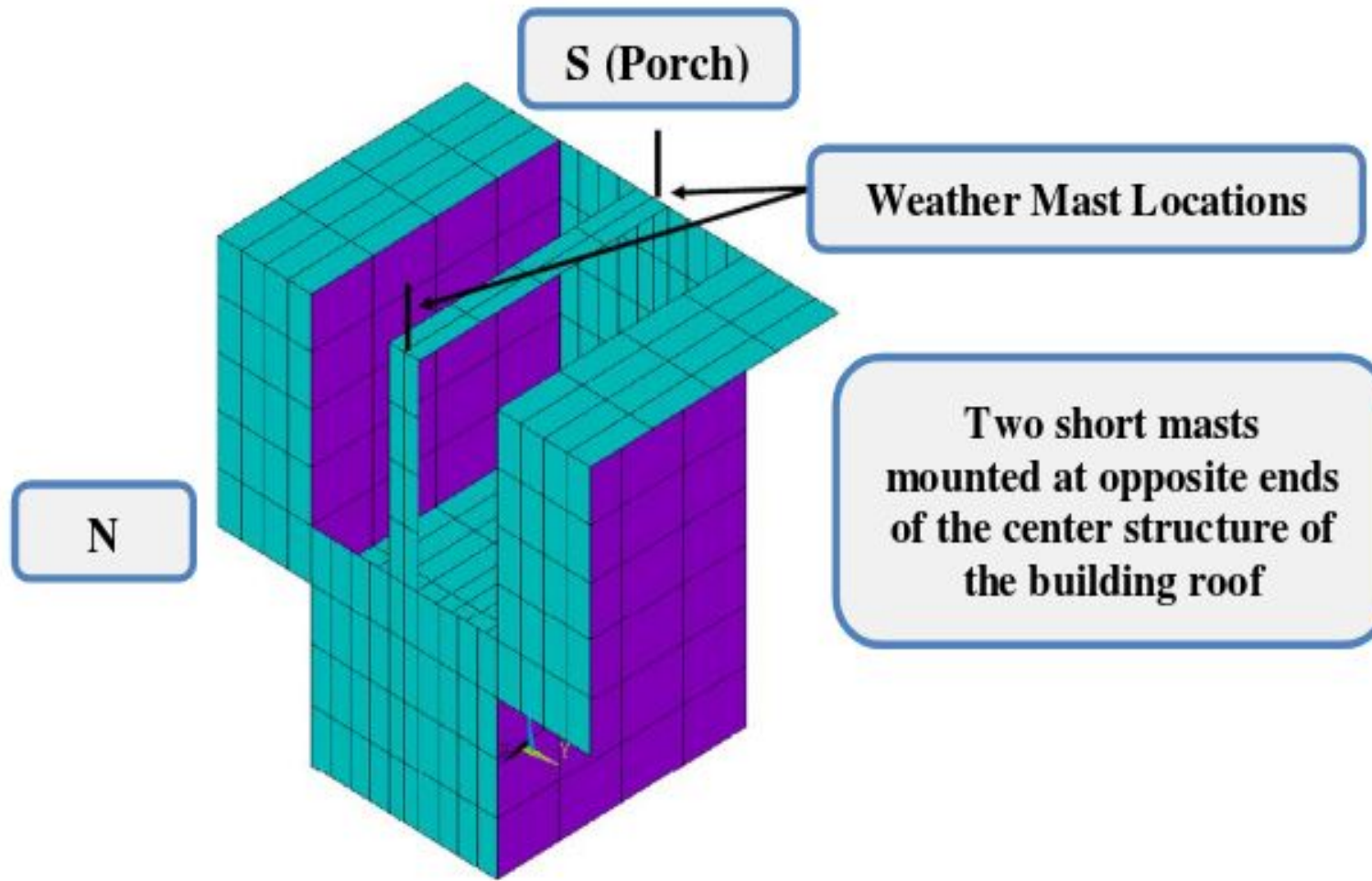
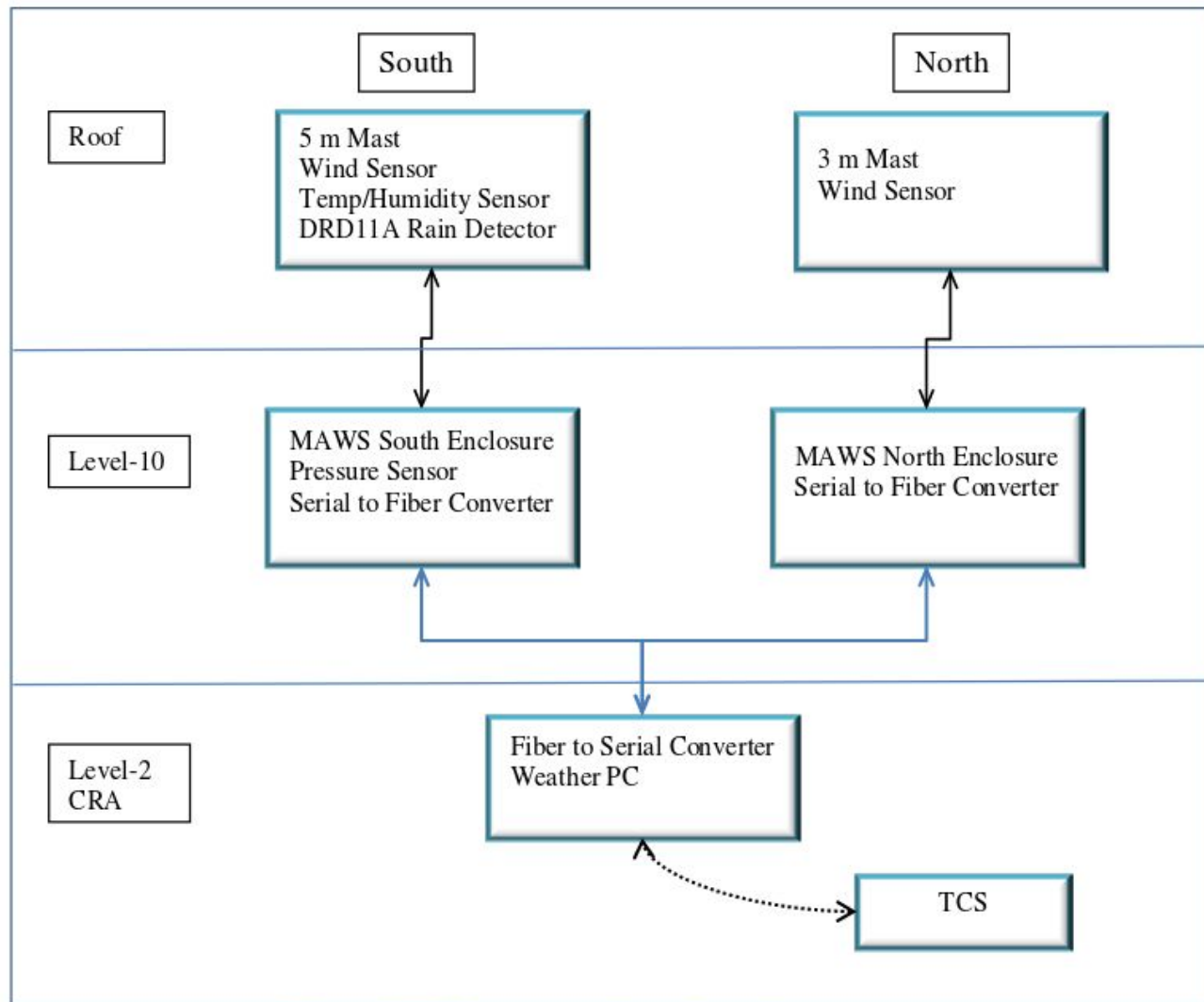
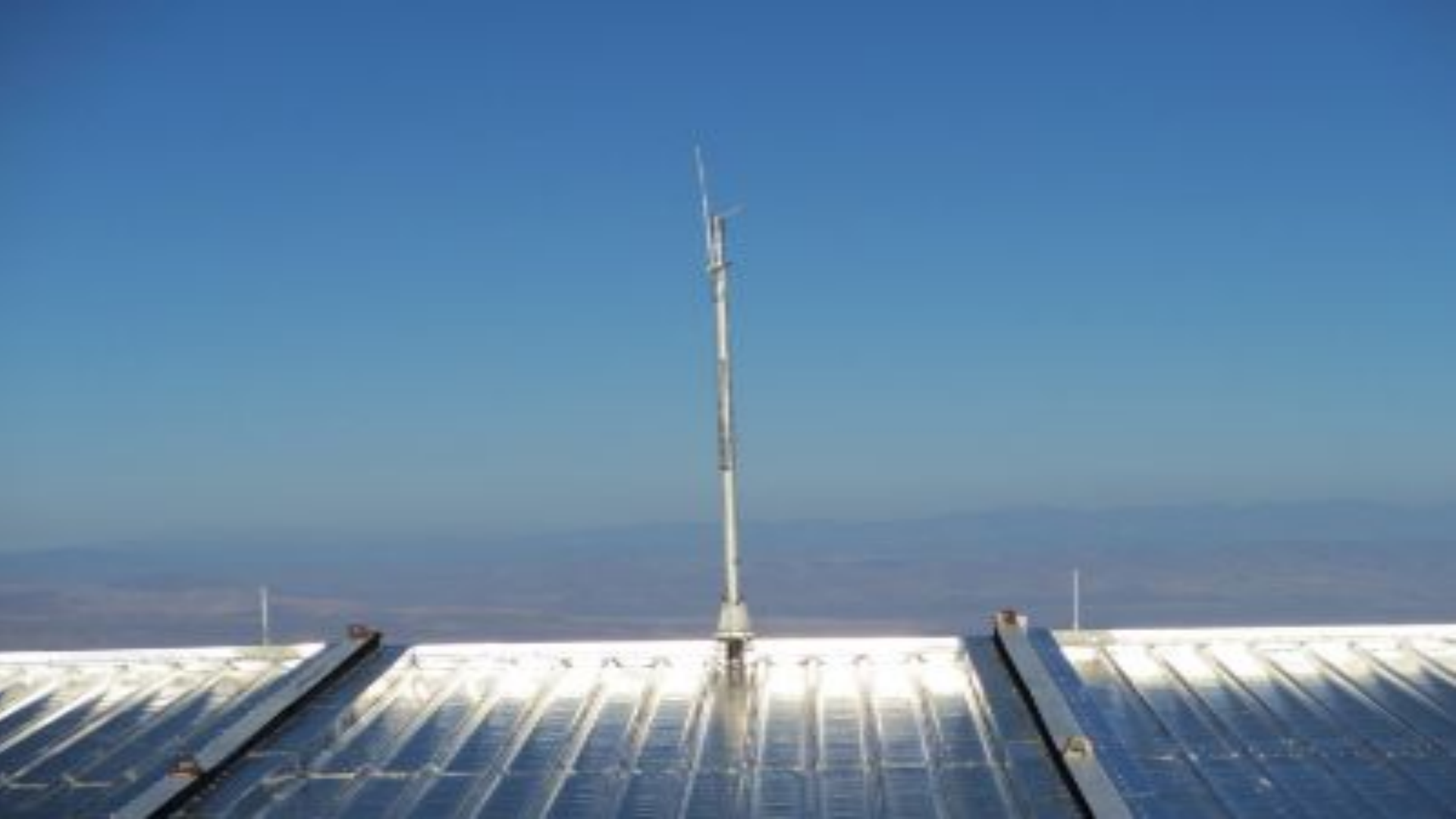


Weather Station

MAWS, All-Sky, SQM







LBT Weather System

Weather Sensor Values

	Instant	T(-24 hr)	Min (10m)	Max (10m)
Air Temperature °C	01.7	-1.1	01.4	01.8
Humidity %	24.4		22.3	24.8
Dewpoint Temp °C	-16.6		-17.2	-16.5
Pressure hPa	684.9		684.8	685

	m/sec	wind °		
● Wind Front	4.7	204.6	0.3	12.4
● Wind Rear	7.6	173.6	2.4	18.2
Enclosure °	●	120.6	Rain	No

Wind



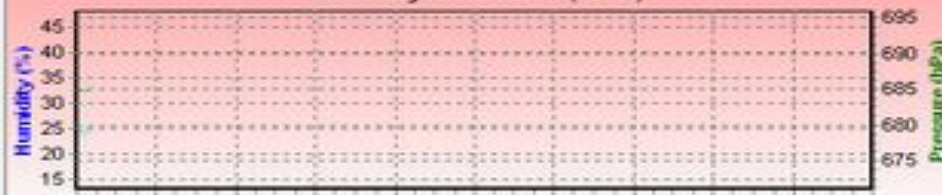
Temperature & Dewpoint (10 Hr)



Wind Speed (1 Hr)



Humidity & Pressure (10 Hr)



Enclosure & Wind Direction (1 Hr)





Select setup

Name	Maws	Last saved	Saved by
Basic09a	5.04	3/19/2007 12:00	Vaisala
Basic10a	5.04	3/19/2007 12:00	Vaisala
Basic11a	5.04	3/19/2007 12:00	Vaisala
LBT_v00	5.04	9/28/2007 11:21	Joe Kraus
LBT_v02	5.04	12/11/2007 10:19	Joe Kraus
LBT_v03	5.04	4/9/2010 14:58	Polans
* setup	5.04	3/19/2007 12:00	Vaisala

New...

Open Copy

Open

Delete

In the Setup View you can manage setup archives and select the setup to modify with Lizard. The Select Setup -frame has a list of the setups saved in the archives. You can use the buttons below the list to create a new setup, open a selected setup, delete a selected setup or open a setup as a copy of an existing setup.

The Configure Setup -frame holds information of the currently selected setup. Setup name must be unique and no more than eight characters long. You can type a description of the setup in the Description box. The text is shown on the information pane when you click on the setup in the archives. This will remind you of the details of each archived setup.

User Comments on This Page...

Configure setup

Name: LBT_v03

Save Setup

Description:

LBT_v01 Sept. 26, 2007
 ForceScan report of all inputs
 fs command is used to trigger output of report to COM0
 QCD201 compass
 Compass report with poll string c1
 Compass reading also available from ForceScan report
 WS425 Configuration - QML201 COM1
 Operation Mode: NMEA Standard

Maws version:

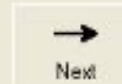
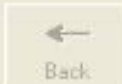
5.04

Static Parameters

Name	Type	Measure	Default
altitude	Number (float)	Altitude [m]	3170.0
comp_offset	Number (float)	Unspecified	0
plevel	Number (float)	Pressure sensor level [m]	0
sid	Text	String / bytearray data	
sname	Text	String / bytearray data	MAWS

Add

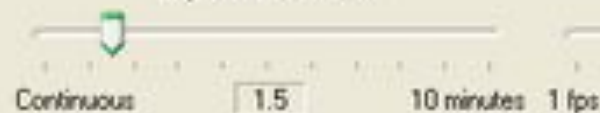
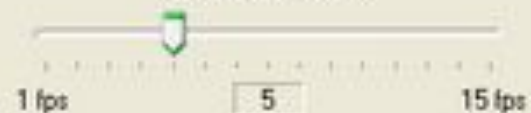
Remove



2014/07/17
21:29:14
0.0000s
Heater On

000234510



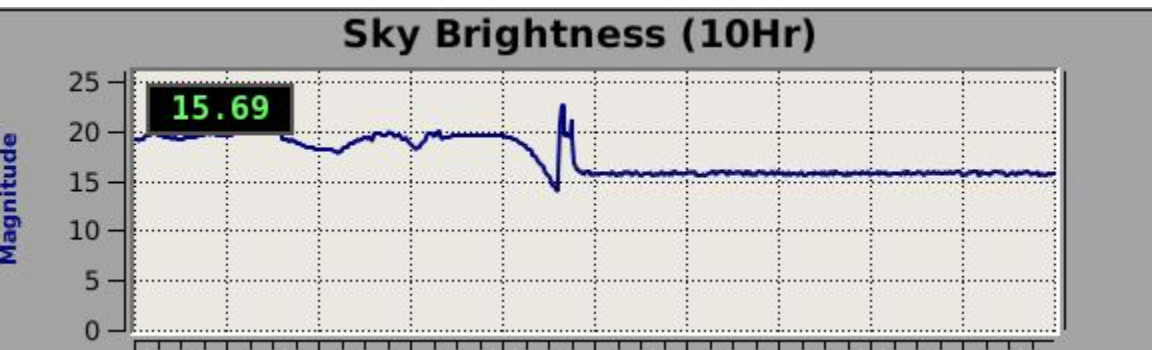
Maximum Exposure Time**Exposure Interval****Animation Rate**

Start Capture

Start Focus

Image Brightness (DDP) Level**Max Number of Frames**

Force Heater On



MAWS rear
(serial port)

AllSky Camera
(USB port)

MAWS front
(USB port)

