

# LINC-NIRVANA



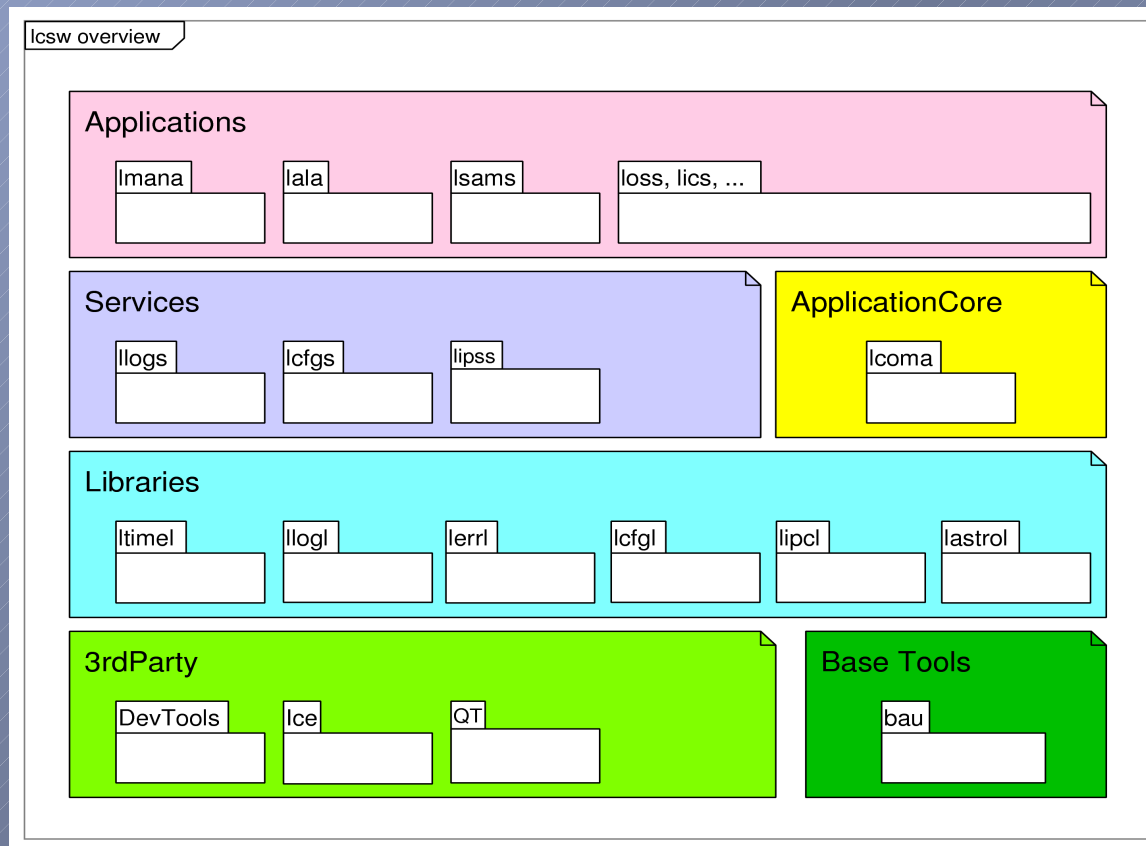
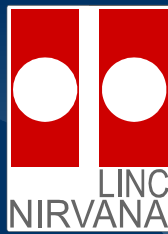
## Common Applications

by

Florian Briegel

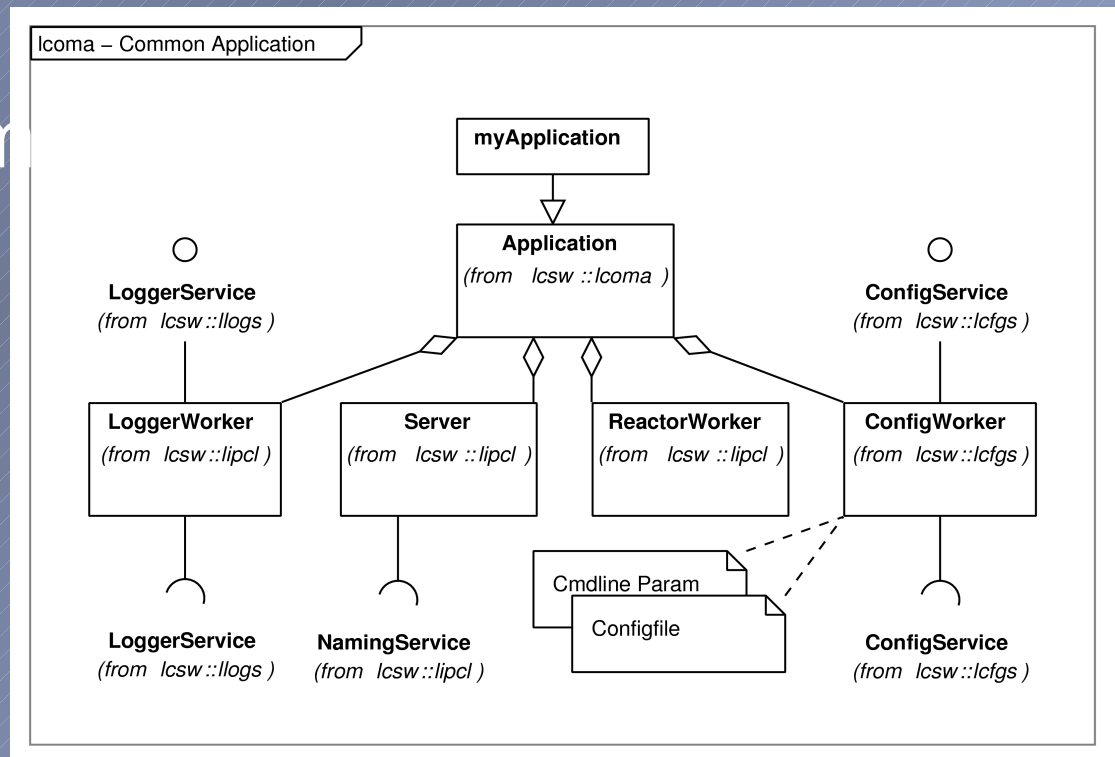
(MPIA)

# LN Common Software Overview



# Icoma - Overview

- Config System
- Event System
- Service Helper
- Logging System
- State Machine

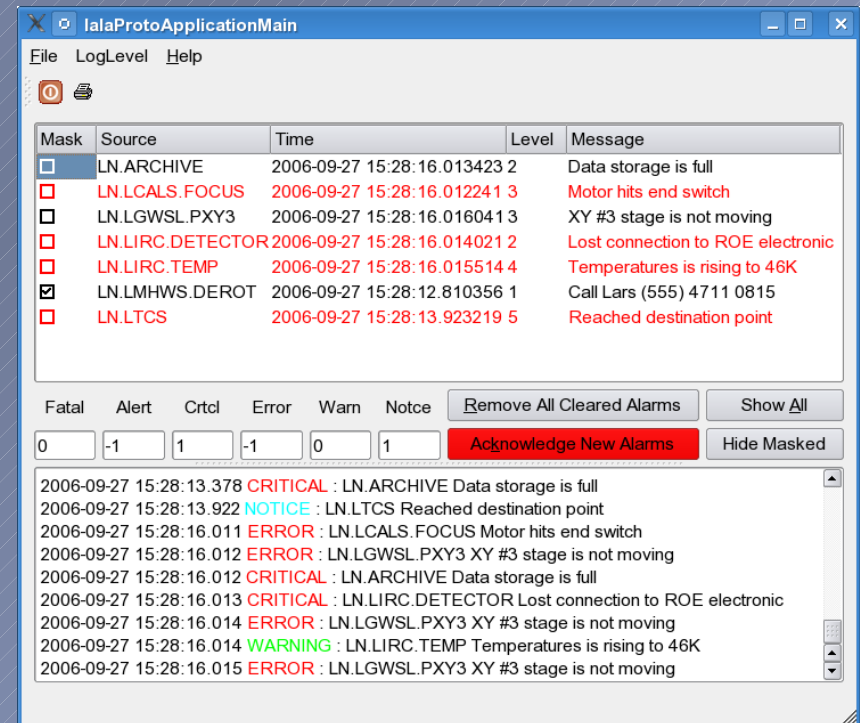


# Icoma - Logging System

- Logger Service Interface
  - Polling
  - Monitoring
- Filter by logging level
- Store & Forward

# Alarm system

- Table of caught alarms
- Unack. alarms counter
- Action buttons
- Status report area



The screenshot shows the IalaProtoApplicationMain window with a menu bar (File, LogLevel, Help) and a toolbar. The main area contains a table of caught alarms with columns for Mask, Source, Time, Level, and Message. Below the table are several control buttons and input fields for filtering and actions.

Mask	Source	Time	Level	Message
<input type="checkbox"/>	LN.ARCHIVE	2006-09-27 15:28:16.013423	2	Data storage is full
<input type="checkbox"/>	LN.LCALS.FOCUS	2006-09-27 15:28:16.012241	3	Motor hits end switch
<input type="checkbox"/>	LN.LGWSL.PXY3	2006-09-27 15:28:16.016041	3	XY #3 stage is not moving
<input type="checkbox"/>	LN.LIRC.DETECTOR	2006-09-27 15:28:16.014021	2	Lost connection to ROE electronic
<input type="checkbox"/>	LN.LIRC.TEMP	2006-09-27 15:28:16.015514	4	Temperatures is rising to 46K
<input checked="" type="checkbox"/>	LN.LMHWS.DEROT	2006-09-27 15:28:12.810356	1	Call Lars (555) 4711 0815
<input type="checkbox"/>	LN.LTCS	2006-09-27 15:28:13.923219	5	Reached destination point

Below the table, there are buttons for 'Remove All Cleared Alarms', 'Show All', and 'Acknowledge New Alarms'. There are also input fields for filtering by severity: Fatal (0), Alert (-1), Crtcl (1), Error (-1), Warn (0), and Notice (1). A 'Hide Masked' button is also present.

The status report area at the bottom shows a list of messages with their timestamps and levels:

```

2006-09-27 15:28:13.378 CRITICAL : LN.ARCHIVE Data storage is full
2006-09-27 15:28:13.922 NOTICE : LN.LTCS Reached destination point
2006-09-27 15:28:16.011 ERROR : LN.LCALS.FOCUS Motor hits end switch
2006-09-27 15:28:16.012 ERROR : LN.LGWSL.PXY3 XY #3 stage is not moving
2006-09-27 15:28:16.012 CRITICAL : LN.ARCHIVE Data storage is full
2006-09-27 15:28:16.013 CRITICAL : LN.LIRC.DETECTOR Lost connection to ROE electronic
2006-09-27 15:28:16.014 ERROR : LN.LGWSL.PXY3 XY #3 stage is not moving
2006-09-27 15:28:16.014 WARNING : LN.LIRC.TEMP Temperatures is rising to 46K
2006-09-27 15:28:16.015 ERROR : LN.LGWSL.PXY3 XY #3 stage is not moving
  
```

# Icoma – Config System

- Common file format (syntax).
- Config Interface
  - Polling
  - Monitoring

```
# some comment
DCS.VERSION = 0.9
DCS.MOT1.DESCR = "DCS
Derotator"
DCS.MOT1.SPEED = 124.7
DCS.MOT1.MINPOS = 200.0"
DCS.MOT1.MAXPOS = 15000.0"
```

# Icoma – State diagram

- OFFLINE
- STANDBY
- ONLINE
- WORKING

