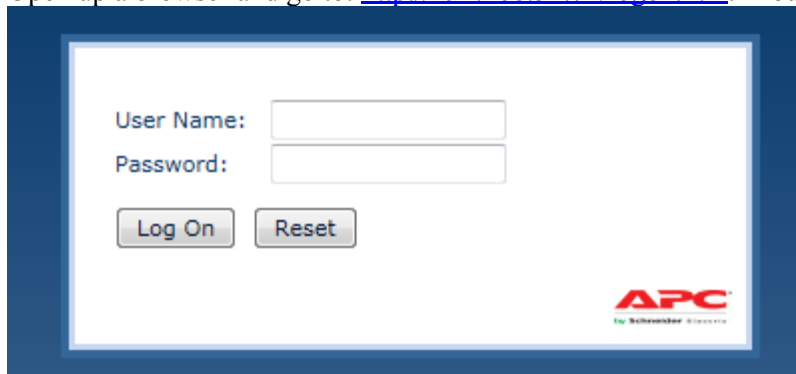


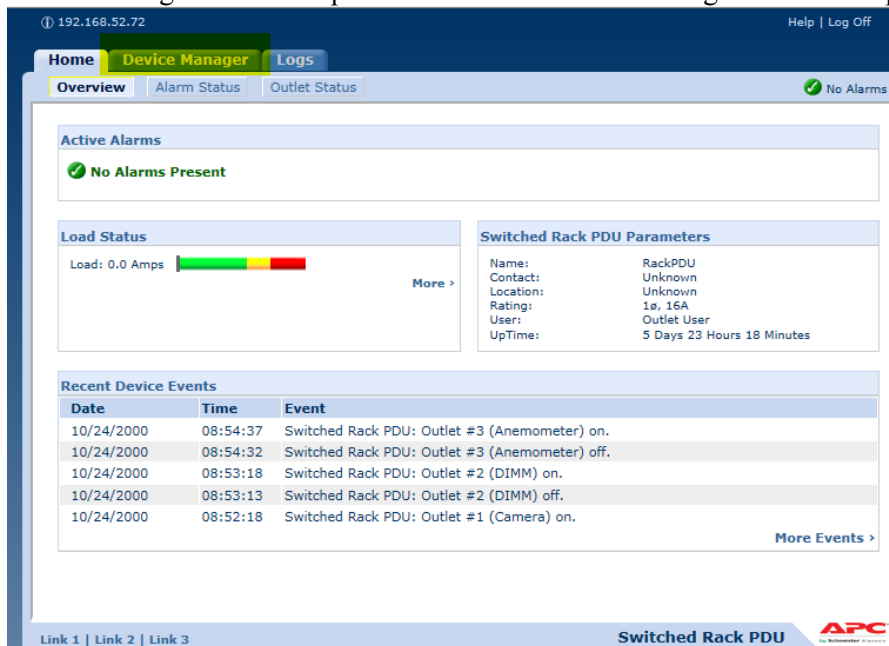
1. Open up a browser and go to: <http://192.168.52.72/logon.htm>. You will see the following:



The image shows a logon interface for an APC device. It features a white background with a blue border. At the top left, there are two input fields: "User Name:" and "Password:". Below these fields are two buttons: "Log On" and "Reset". In the bottom right corner, the APC logo is displayed, which includes the text "APC" in red and "by Schneider Electric" in smaller black text below it.

2. Log on with the following credentials:
Username: lbtuser
Password: lbtuser

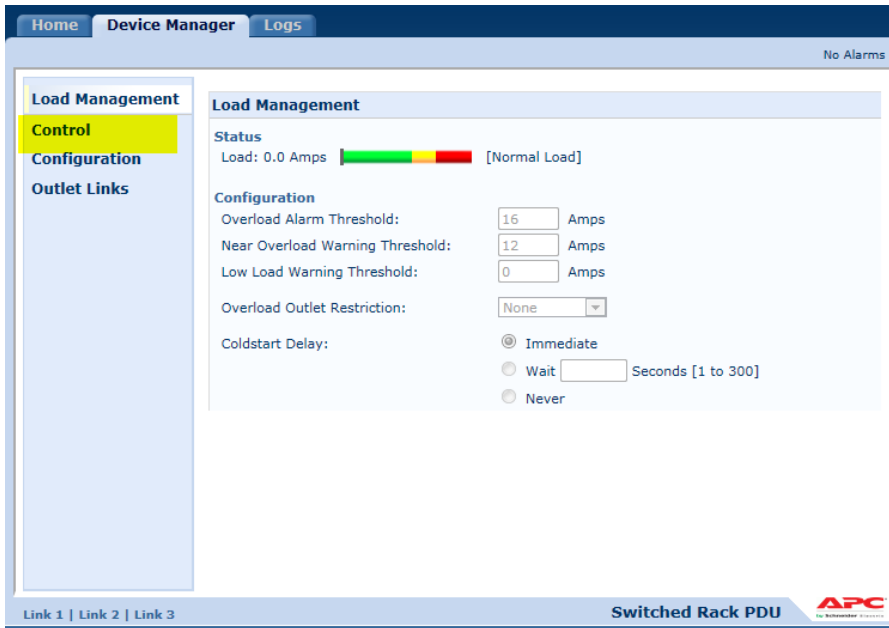
3. The following screen will open. Click on the Device Manager tab at the top:



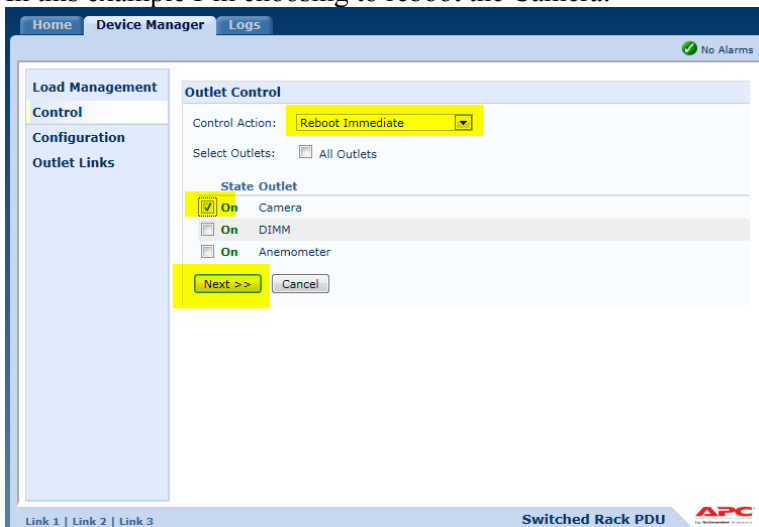
The image shows the main monitoring dashboard for an APC Switched Rack PDU. The interface is dark-themed with a blue header. At the top left, the IP address "192.168.52.72" is shown. The header contains navigation tabs: "Home", "Device Manager" (which is highlighted in green), and "Logs". Below the header, there are sub-tabs: "Overview" (selected), "Alarm Status", and "Outlet Status". A green checkmark and the text "No Alarms" are visible in the top right of the sub-tab area. The main content area is divided into several sections: "Active Alarms" with a green checkmark and "No Alarms Present"; "Load Status" showing "Load: 0.0 Amps" with a green progress bar and a "More >" link; "Switched Rack PDU Parameters" listing details like Name (RackPDU), Contact (Unknown), Location (Unknown), Rating (1ø, 16A), User (Outlet User), and UpTime (5 Days 23 Hours 18 Minutes); and "Recent Device Events" which is a table with columns for Date, Time, and Event. The footer contains "Link 1 | Link 2 | Link 3" on the left, "Switched Rack PDU" in the center, and the APC logo on the right.

Date	Time	Event
10/24/2000	08:54:37	Switched Rack PDU: Outlet #3 (Anemometer) on.
10/24/2000	08:54:32	Switched Rack PDU: Outlet #3 (Anemometer) off.
10/24/2000	08:53:18	Switched Rack PDU: Outlet #2 (DIMM) on.
10/24/2000	08:53:13	Switched Rack PDU: Outlet #2 (DIMM) off.
10/24/2000	08:52:18	Switched Rack PDU: Outlet #1 (Camera) on.

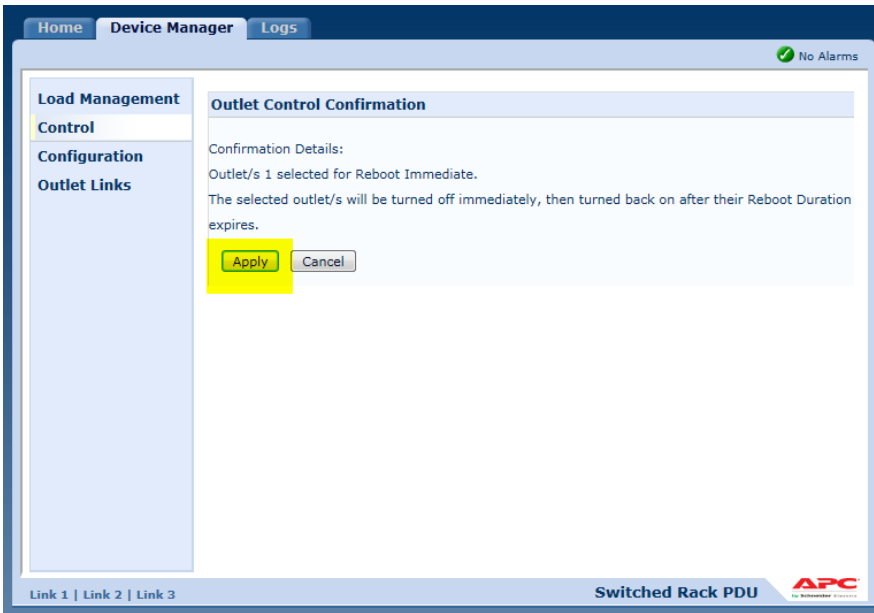
4. At the next screen, click Control:



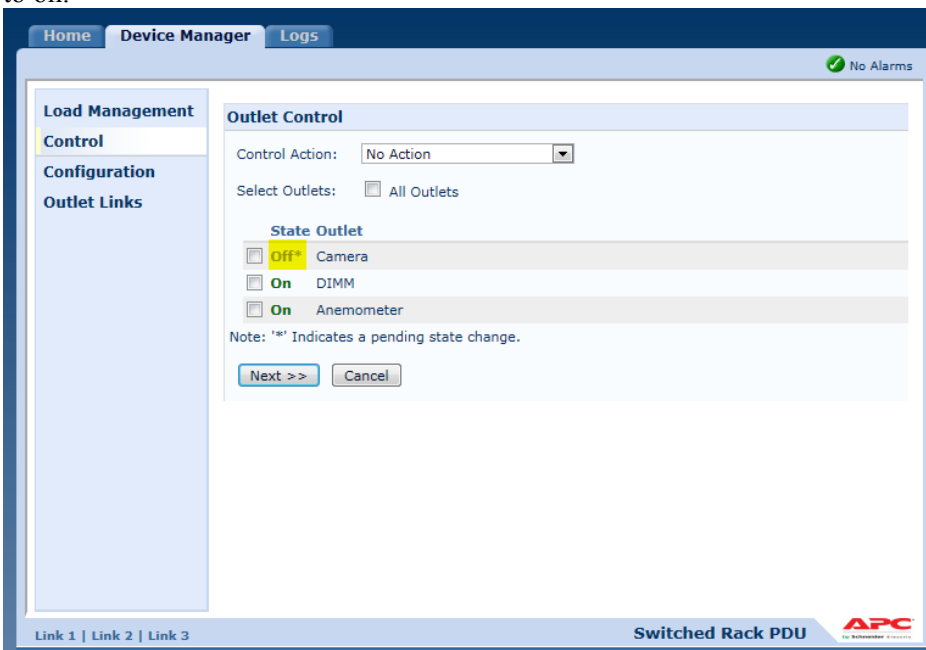
- To reboot a device, use the pull down menu next to Control Action and choose “Reboot Immediate”, select the outlet you want to power cycle, and then click Next. In this example I’m choosing to reboot the Camera:



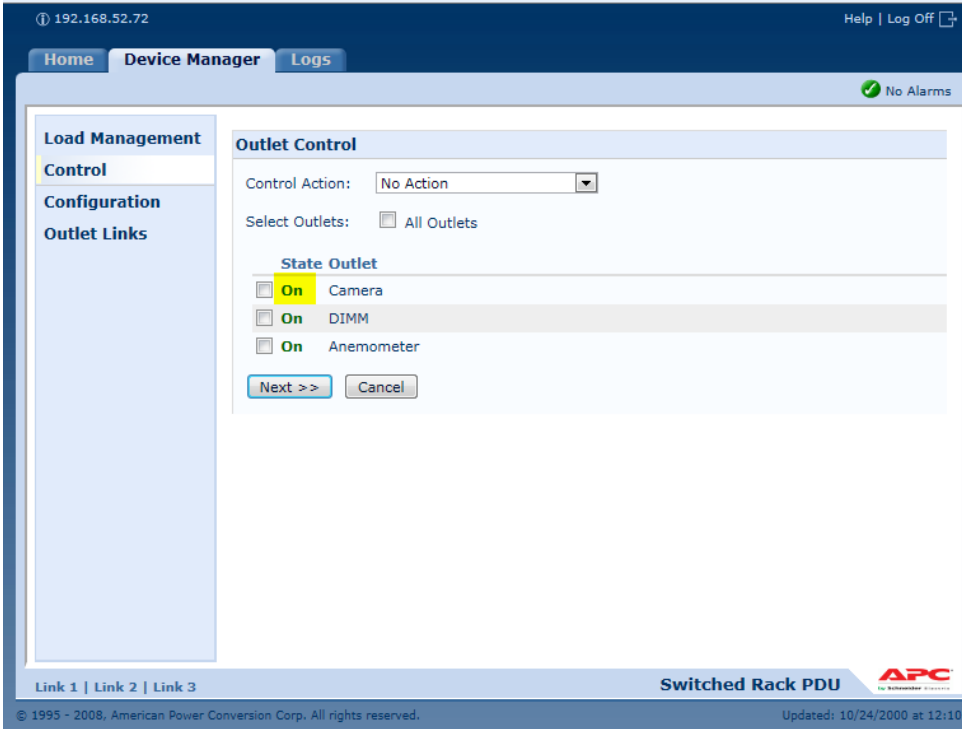
- The next screen will confirm your selections and ask you to apply the change. Click “Apply”.



7. The last screen you will see will show you the outlet state of the device you power cycled. Here the camera shows a state of off. After a few seconds, refresh your screen and it will change back to on.



Now it shows the outlet is back on (I refreshed the screen)



8. If you are done power cycling outlets, you can now log off (located in the upper right of the screen):

