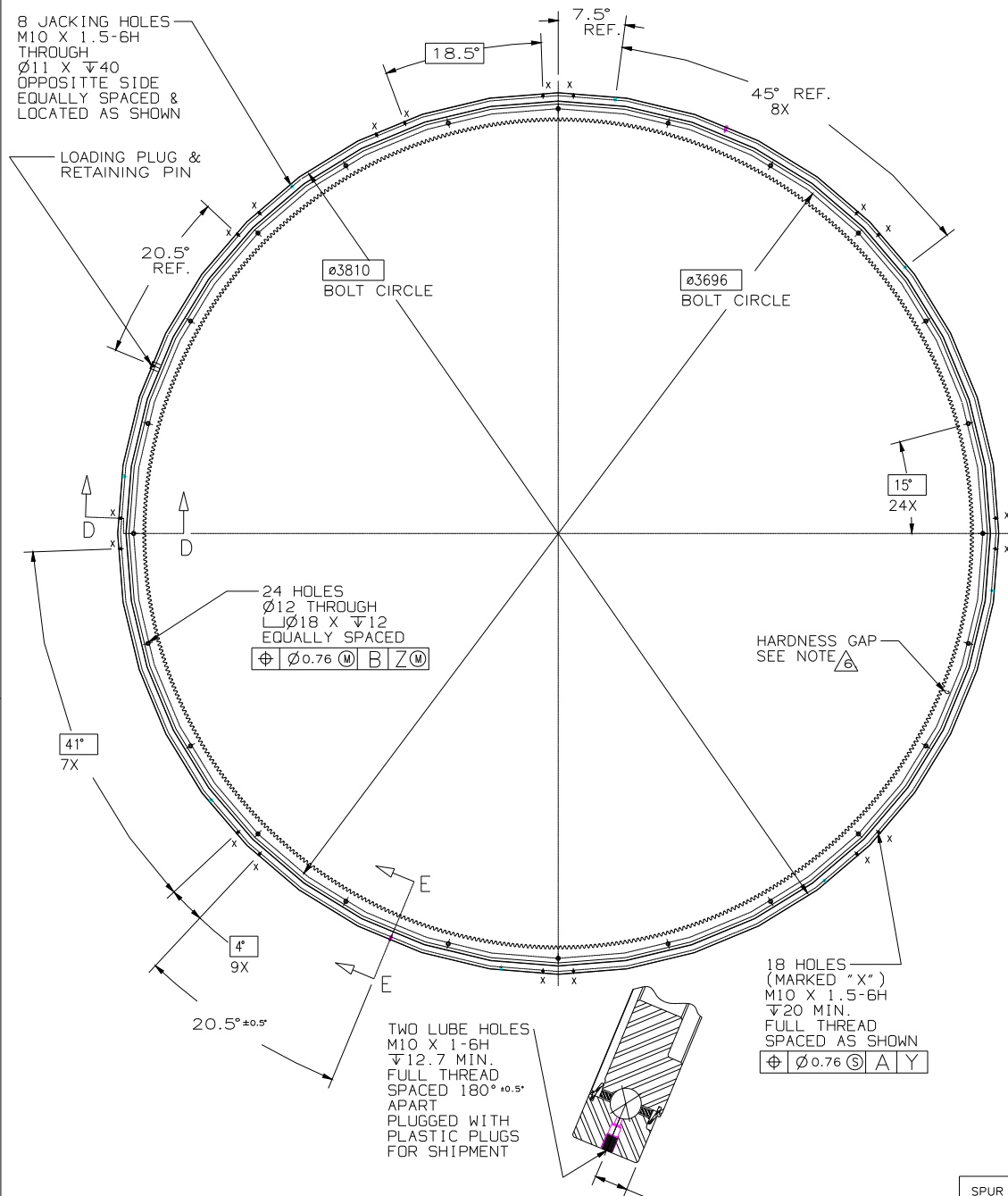
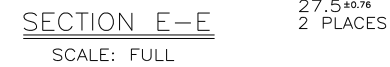
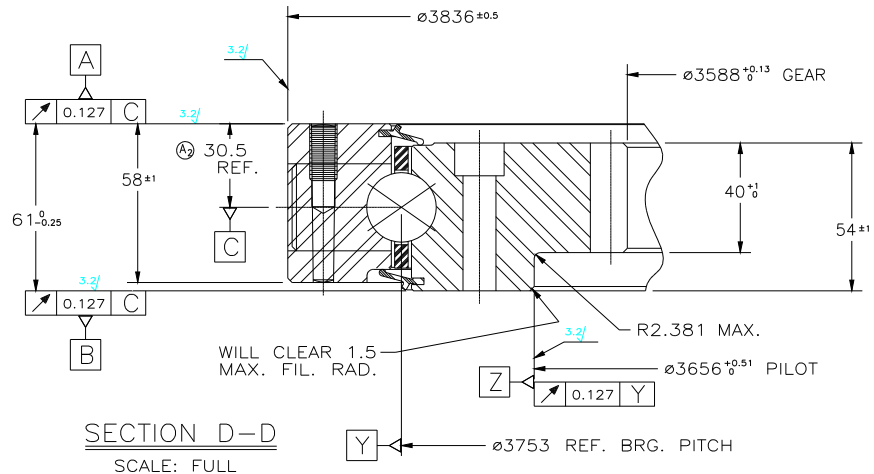


REVISIONS			
REV.	DESCRIPTION	DATE	BY/CHK.
A	NOTE 1 WAS STARTING TORQUE REQUIREMENT DIM. WAS FROM OPP. FACE	09-14-99	CHZ LML SDH



- (1.)
- (2.) SEALS ARE DESIGNED FOR LIGHT TO ZERO CONTACT AND ARE HELD IN PLACE BY MECHANICAL RETENTION ONLY (NO GLUE PERMITTED).
- (3.) SEE KAYDON CATALOG FOR APPLICATION INFORMATION, METHOD OF LOAD ANALYSIS, INSTALLATION PROCEDURE, AND MAINTENANCE.
- (4.) APPROXIMATE BEARING WEIGHT - 504 kg.
- (5.) BEARING IS FILLED FULL WITH MOBILITH SHC 220 GREASE.
- (6.) MARKING - ON BEARING O.D. ADJACENT TO LOAD PLUG - "KAYDON 14683001", SERIAL NO., & DATE ON TOP FACE OF INNER RACE - "G" AT HARDNESS GAP POINT OF MINIMUM GEAR BACKLASH WILL BE MARKED WITH YELLOW PAINT IN TOOTH SPACE
- (7.) MATERIAL - RACES-----AISI 4150H STEEL, CORE 248-302 BHN EXCEPT PATHS Hrc 58 MIN. (SURFACE) BALLS-----52100 STEEL SEALS-----BUNA-N RUBBER SEPARATORS---ACETAL STRIPS WITH CIRCULAR POCKETS



ALL DIMENSIONS ARE MILLIMETERS.

CONFIDENTIALITY STATEMENT  
WARRANTY DISCLAIMER  
This drawing is the property of Kaydon Bearings, Inc. and is not to be reproduced, stored in a retrieval system, or transmitted in any form or by any means, electronic, mechanical, photocopying, recording, or by any information storage and retrieval system, without the prior written permission of Kaydon Bearings, Inc. The user of this drawing shall be responsible for the accuracy of the information contained herein and for the results of any use of this information. Kaydon Bearings, Inc. makes no warranty, express or implied, for the use of this information for any purpose other than that intended by Kaydon Bearings, Inc. Kaydon Bearings, Inc. is not responsible for any damage or injury resulting from the use of this information.

UNLESS OTHERWISE SPECIFIED: DIMENSIONS ARE IN INCHES AND APPLY AFTER SURFACE TREATMENT AND AT 68°F. INTERPRET DIM. AND TOL. PER ASME Y14.5M - 1994 EXCEPT RINGS SHOWN ARE CONSIDERED "NON-RIGID" PARTS. SIZES SPECIFIED ARE "AVERAGE DIAMETERS" UNLESS NOTED OTHERWISE. DO NOT SCALE DRAWING.	THIRD ANGLE PROJECTION
TOLERANCES ARE AS FOLLOWS: XX ± --- XXX ± --- ANGLES ± ---	
	DRAWN CHZ 06-16-99
	CHECK LML 07-01-99
	APPD. SDH 07-01-99

SPECIFICATION DRAWING	
KAYDON CUSTOM BEARINGS MUSKEGON, MICHIGAN USA	
TITLE	
4 POINT CONTACT BALL RADIAL BEARING	
DRAWN CHZ 06-16-99	SIZE DWG. NO.
CHECK LML 07-01-99	D 14683001
APPD. SDH 07-01-99	SCALE: 3/32 CAD NO. 1468301S SHEET 1 OF 1

SPUR GEAR DATA	
TOOTH FORM	MODULE INVOLUTE
PRESSURE ANGLE	20°
MODULE	6
PITCH DIAMETER	3600 REF.
NO. OF TEETH	600
ADDENDUM	6 REF.
WHOLE DEPTH	13.5 REF.
CIRC. TOOTH THICKNESS ON PITCH LINE	9.399/9.325
ALLOWANCE FOR BACKLASH	0.025/0.100
HARDNESS	248-302 BHN
AGMA QUALITY NO.	8 REF.
MATES WITH TOOTH PINION OF THE FOLLOWING DIM'S.	
O.D. -	WHOLE DEPTH -
CIRC. TOOTH THICKNESS ON PITCH LINE -	CENTER DISTANCE - ADJUSTABLE / FIXED
TRUE INVOLUTE FORM DIAMETER -	

DESIGN BY: DATE: 06-18-99

DRAWN BY: DATE: 06-18-99

LST REV BY: DATE: 07-01-99

CHECK BY: DATE: 07-01-99

ACCEPT BY: DATE:

RELEASE BY: DATE:

SCALE: LOCAL DWG. FILE: CAN NO:

UNITS: mm FORM (D/A1) SCALED BY: D/A1 PREFER PLOT SIZE: 674x009 B

**LARGE BINOCULAR TELESCOPE**

LBT Project Office/USA  
Steward Observatory, University of Arizona  
Tucson, AZ 85721 USA  
Ph. 1 520 621-1559 Fax: 1 520 621-9843

LBT Project Office/Italy  
Observatorio Astronomico di Arcetri  
Large Envisia Farm, S. 50125 Firenze, Italy  
Ph. 39 55 2752291 Fax: 39 55 2752292

Telescope Auxiliaries  
Instrument Rotator  
Gregorian Rotator  
Gregorian rotator Bearing - Cable wrap  
4 Point contact ball radial bearing