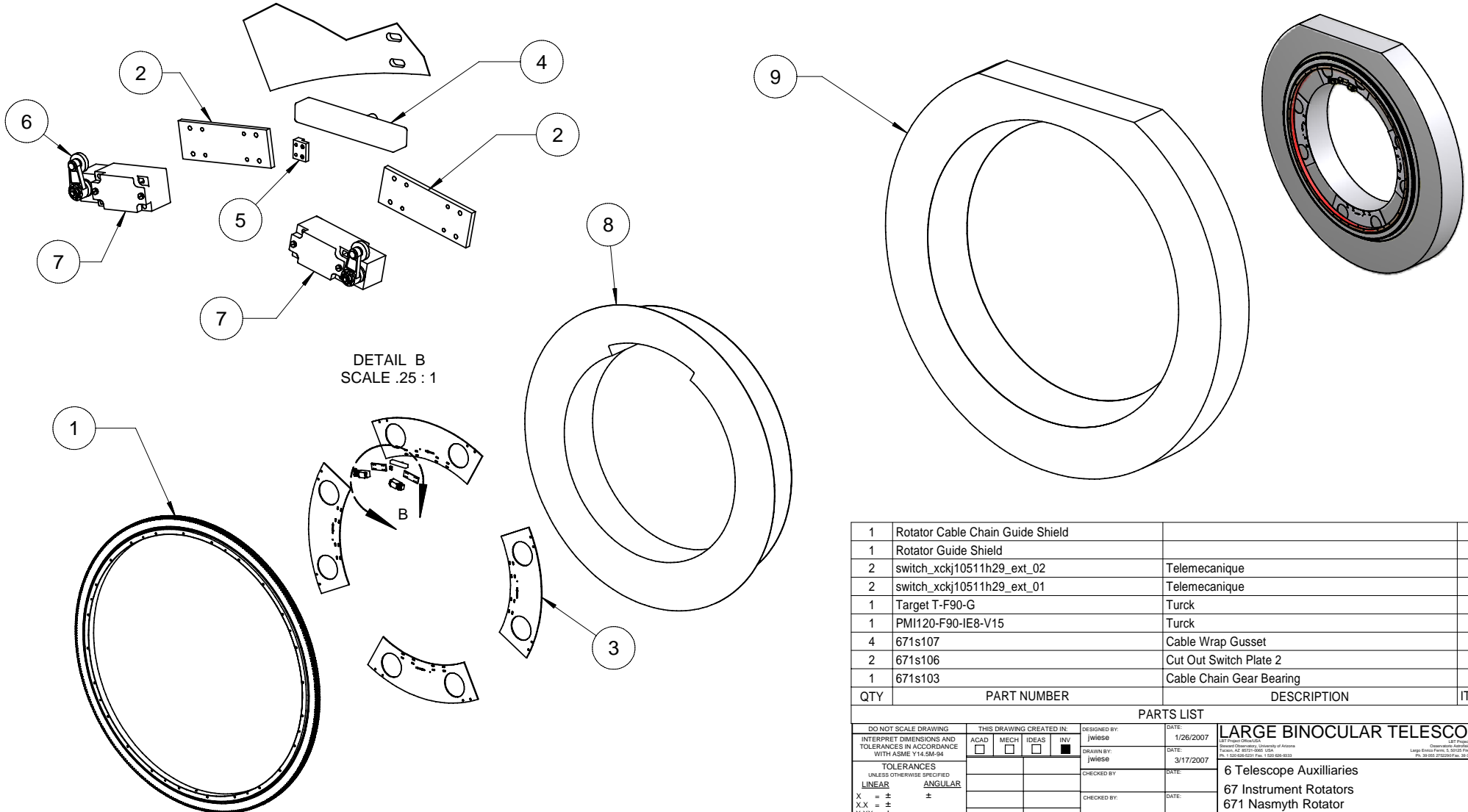


REVISION HISTORY				
REV	DESCRIPTION	AUTH	DATE	APPROVED
A	INITIAL RELEASE	-	3/16/07	R. MEEKS



QTY	PART NUMBER	DESCRIPTION	ITEM
1	Rotator Cable Chain Guide Shield		9
1	Rotator Guide Shield		8
2	switch_xckj10511h29_ext_02	Telemecanique	7
2	switch_xckj10511h29_ext_01	Telemecanique	6
1	Target T-F90-G	Turck	5
1	PMI120-F90-IE8-V15	Turck	4
4	671s107	Cable Wrap Gusset	3
2	671s106	Cut Out Switch Plate 2	2
1	671s103	Cable Chain Gear Bearing	1

PARTS LIST

DO NOT SCALE DRAWING		THIS DRAWING CREATED IN:		DESIGNED BY:	DATE:	LARGE BINOCULAR TELESCOPE
INTERPRET DIMENSIONS AND TOLERANCES IN ACCORDANCE WITH ASME Y14.5M-94		ACAD	MECH	IDEAS	INV	
TOLERANCES UNLESS OTHERWISE SPECIFIED				DRAWN BY:	DATE:	6 Telescope Auxiliaries
LINEAR		ANGULAR		DATE:	DATE:	
X = ±		±		CHECKED BY:	DATE:	671 Nasmyth Rotator
XX = ±				CHECKED BY:	DATE:	Cable Chain Assembly
XXX = ±				ACCEPT BY:	DATE:	
DIAMETRICAL: SEE SPEC 6-002				RELEASE BY:	DATE:	
(DIMENSIONS AND FITS UNLESS OTHERWISE SPECIFIED)				SCALE:	N.T.S.	
MATERIAL:				NEXT ASSY	USED ON	
FINISH: NONE				ASSEMBLY APPLICATION	UNITS: mm	

