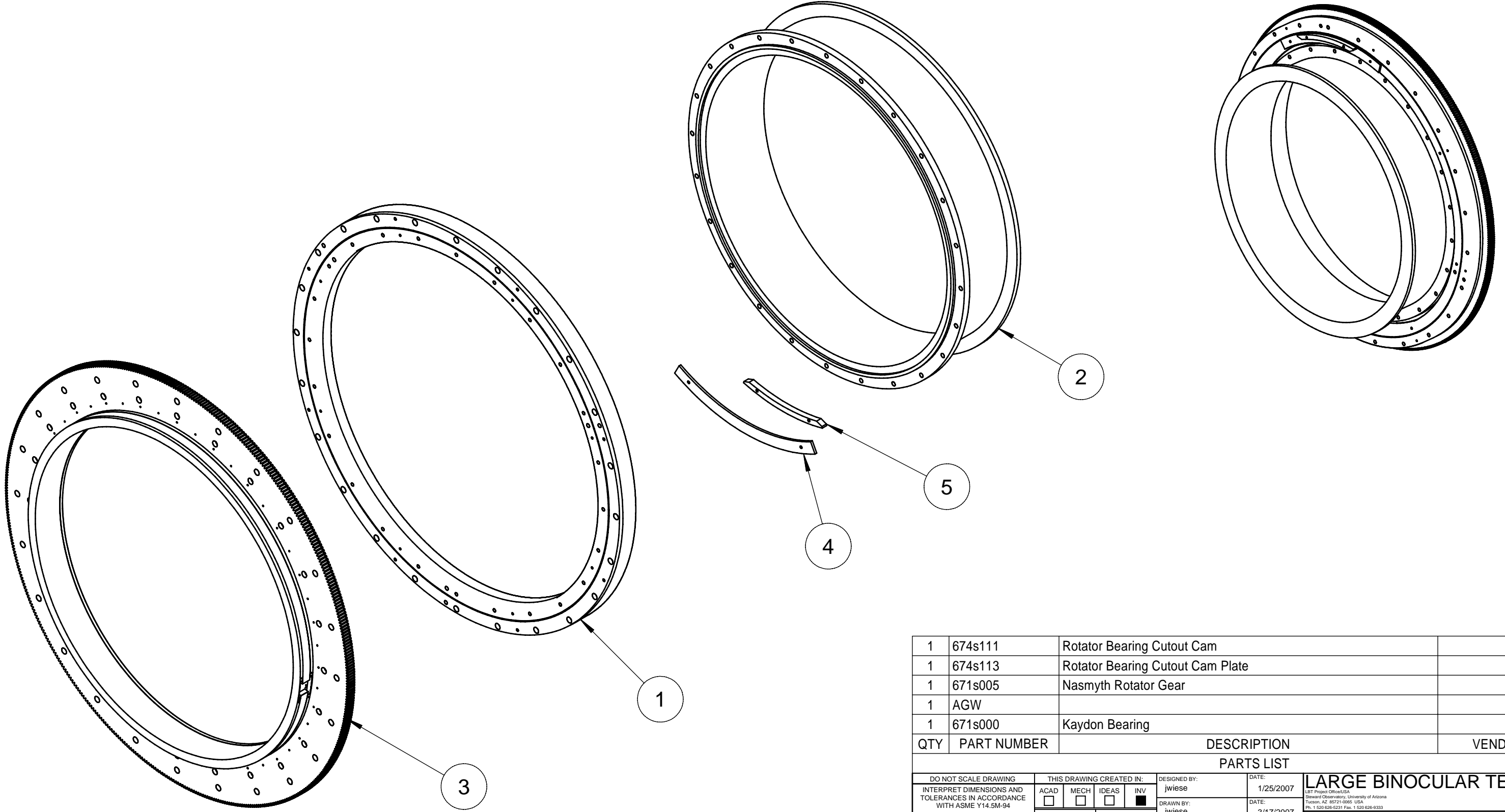
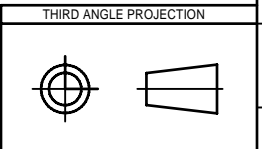


REVISION HISTORY				
REV	DESCRIPTION	AUTH	DATE	APPROVED
A	INITIAL RELEASE	-	3/16/2007	R. MEEKS



QTY	PART NUMBER	DESCRIPTION	VENDOR	ITEM
1	674s111	Rotator Bearing Cutout Cam		5
1	674s113	Rotator Bearing Cutout Cam Plate		4
1	671s005	Nasmyth Rotator Gear		3
1	AGW			2
1	671s000	Kaydon Bearing		1

PARTS LIST				
DO NOT SCALE DRAWING	THIS DRAWING CREATED IN:		DESIGNED BY:	DATE:
INTERPRET DIMENSIONS AND TOLERANCES IN ACCORDANCE WITH ASME Y14.5M-94	ACAD <input type="checkbox"/>	MECH <input type="checkbox"/>	IDEAS <input type="checkbox"/>	INV <input checked="" type="checkbox"/>
TOLERANCES UNLESS OTHERWISE SPECIFIED			DESIGNED BY: jwiese	DATE: 1/25/2007
LINEAR			DRAWN BY: jwiese	DATE: 3/17/2007
X = ±			CHECKED BY:	DATE:
X.X = ±			CHECKED BY:	DATE:
X.XX = ±			ACCEPT BY:	DATE:
DIAMETRICAL: SEE SPEC S-002			RELEASE BY:	DATE:
DIMENSIONS ARE IN MM / DIMENSIONS IN [] ARE IN INCHES			SCALE: N.T.S.	
MATERIAL:	NEXT ASSY	USED ON	UNITS: mm	
FINISH: NONE	ASSEMBLY APPLICATION			



LARGE BINOCULAR TELESCOPE			
<small>LBT Project Office/USA Steward Observatory, University of Arizona Tucson, AZ 85721-0065 USA Ph. 1 520 626-6231 Fax. 1 520 626-9333</small>			
<small>LBT Project Office/Italy Osservatorio Astronomico di Arcetri Largo Enrico Fermi, 5, 50125 Firenze, ITALY Ph. 39 055 2752260 Fax. 39 055 2752262</small>			
6 Telescope Auxilliaries			
67 Instrument Rotators			
671 Nasmyth Rotator			
Rotator Assembly			
Sheet 1 of 1	PLOT SIZE: B	CAN NO: 671s008	REVISION: A